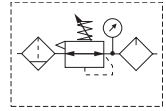
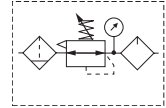


## P3Y Combinations

**Filter + Regulator + Lubricator Combinations****5 micron element, 12 bar (174 psig) regulator + gauge and wall mounting bracket**

Port Size	Flow <sup>‡</sup> scfm	Weight lb (kg)	Combined Manual / Semi-Auto Drain <sup>†</sup>	Auto Drain <sup>†</sup>
3/4"	170	7.3 (3.3)	<b>P3YCB96SECNFLNF</b>	<b>P3YCB96SEANFLNF</b>
1"	170	7.3 (3.3)	<b>P3YCB98SECNFLNF</b>	<b>P3YCB98SEANFLNF</b>

<sup>†</sup> Standard part numbers shown in bold. For other models refer to Options chart below.<sup>‡</sup> Flow with 10 bar (145 psig) inlet pressure, 6.3 bar (91.4 psig) set pressure and 1 bar (14.5 psig) pressure drop.**Filter / Regulator + Lubricator Combinations****5 micron element, 12 bar (174 psig) regulator + gauge and wall mounting bracket**

Port Size	Flow <sup>‡</sup> scfm	Weight lb (kg)	Combined Manual / Semi-Auto Drain <sup>†</sup>	Auto Drain <sup>†</sup>
3/4"	315	6.2 (2.8)	<b>P3YCA96SECNFLNF</b>	<b>P3YCA96SEANFLNF</b>
1"	340	6.2 (2.8)	<b>P3YCA98SECNFLNF</b>	<b>P3YCA98SEANFLNF</b>

<sup>†</sup> Standard part numbers shown in bold. For other models refer to Options chart below.<sup>‡</sup> Flow with 10 bar (145 psig) inlet pressure, 6.3 bar (91.4 psig) set pressure and 1 bar (14.5 psig) pressure drop.

## Ordering Information:

P3YCA 9 6 SE C N F LNF									
<b>Basic Series</b>		<b>Thread Type*</b>		<b>Port Size</b>		<b>Drain Type</b>		<b>Adjustment Range</b>	
Filter / Regulator + Lubricator	P3YCA	BSPP	1	3/4	6	C	Combined Manual / Semi-Auto Drain	F	0-12 Bar (0 to 174 psi) with Gauge
Filter + Regulator + Lubricator	P3YCB	NPT	9	1	8	A	Auto Drain	J	0-16 Bar (0 to 232 psi) with Gauge

\* Note: For 1-1/2" ported unit, please order P3YKA\*BCP port block kit separately.

**WARNING**

**Product rupture can cause serious injury.  
Do not connect regulator to bottled gas.  
Do not exceed Maximum primary pressure rating.**

**CAUTION:****REGULATOR PRESSURE ADJUSTMENT –**

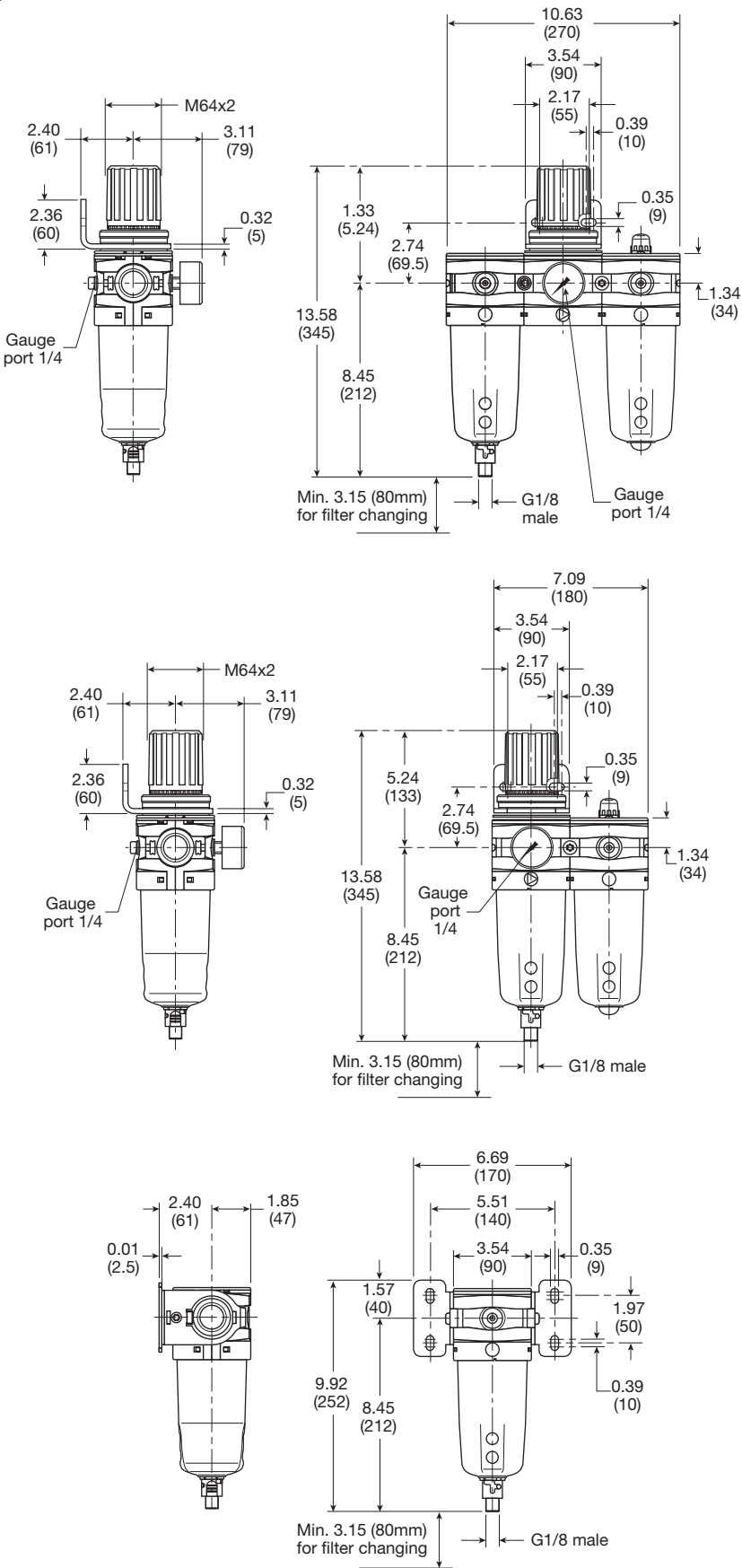
The working range of knob adjustment is designed to permit outlet pressures within their full range. Pressure adjustment beyond this range is also possible because the knob is not a limiting device. This is a common characteristic of most industrial regulators, and limiting devices may be obtained only by special design. For best performance, regulated pressure should always be set by increasing the pressure up to the desired setting.

 Most popular.



For inventory, lead times, and kit

P3Y Combinations



C	P3Y Products	
	Filters	
	Coalescers	
	Regulators	
	Filter / Regulators	
Lubricators		
Combinations		
Accessories and Kits		



For inventory, lead times, and kit